



Federal Ministry
of Food
and Agriculture

GLOBAL
FORUM FOR FOOD
AND
AGRICULTURE

Measuring the transition towards more sustainable grazing systems

Evidence from the work within the *agri benchmark* Network

Dr. Claus Deblitz, Thünen Institute of Farm Economics



In cooperation with:

Centro para la Investigación
en Sistemas Sostenibles
de Producción Agropecuaria



Global Network on
Silvopastoral Systems



Instituto Nacional de
Tecnología Agropecuaria



Universidade Federal
de São João del-Rei



Universidade Federal
de São João del-Rei



bmel.de

Three main challenges of pasture systems in South America and Africa

Farm level

- High emissions per kg output due to low productivity, overgrazing, erosion, desertification

Market and sector level

- Lack of management knowledge and advisory services, no/limited access to capital

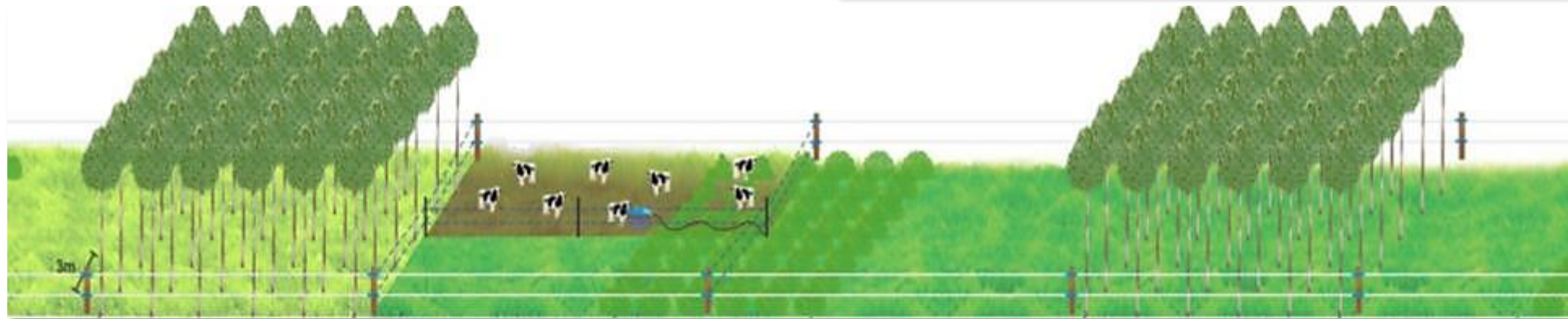
Policy level

- Lack or inadequate political governance



The approach of *agri benchmark* (I)

- **Join forces of various disciplines** in one location:
Environment – GHG measurements – performance – economics – animal welfare
- Example: **silvopastoral systems** analysis: basically a rotational grazing system with shrubs and trees
- 12 case studies in
Argentina,
Brazil,
Colombia
Mexico



Federal Ministry
of Food
and Agriculture

GLOBAL
FORUM OF FOOD AND
AGRICULTURE

The approach of *agri benchmark* (II)

1 In the network, we are using standardised methods globally

- Collect and crosscheck data and results with **producers** and **advisors**
- Use standard **questionnaire, model** and outputs
- Produce regular / annual **updates**

2 In projects, the most important steps are

- Define, specify and quantify **baseline** (status quo) and mitigation **scenarios**
- Analyse **implementation phase** (multiple years) not just comparative-static → implications for cash-flow

3 We also offer **trainings** for partners and project members

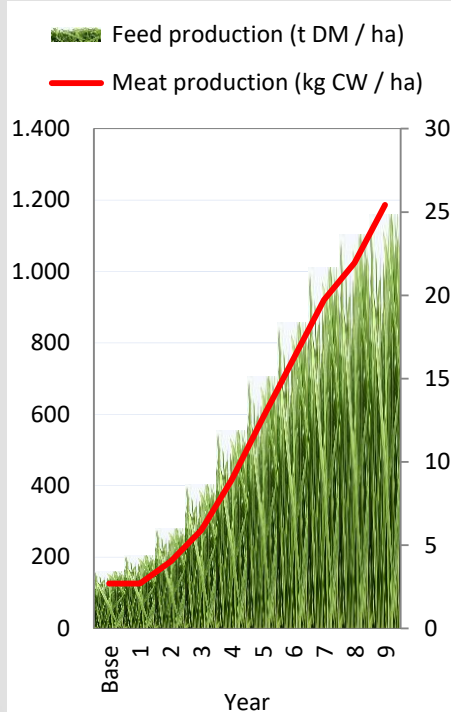


Federal Ministry
of Food
and Agriculture

GLOBAL
FORUM OF FOOD
AND AGRICULTURE

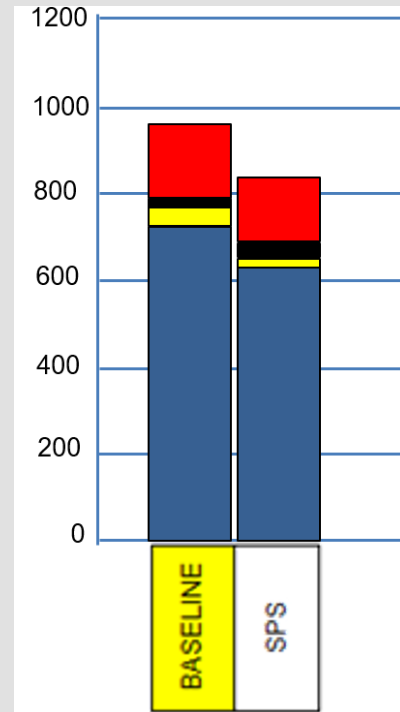
Multiple wins with silvopastoral systems are possible

More grass and higher productivity



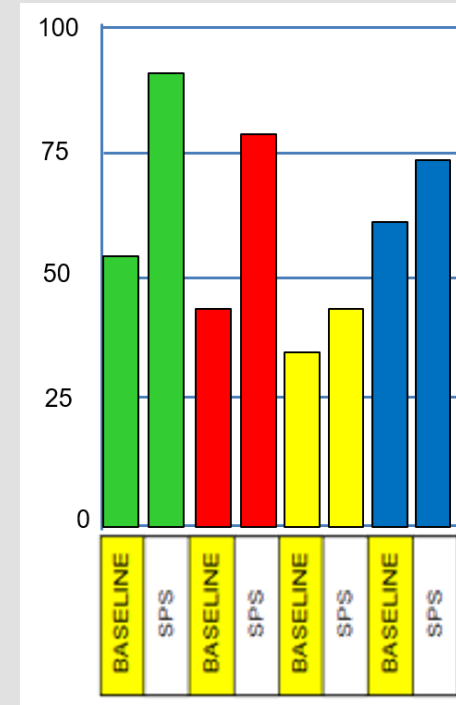
Federal Ministry
of Food
and Agriculture

Lower GHG-Emissions (kg CO₂ eq. per 100 kg CW)



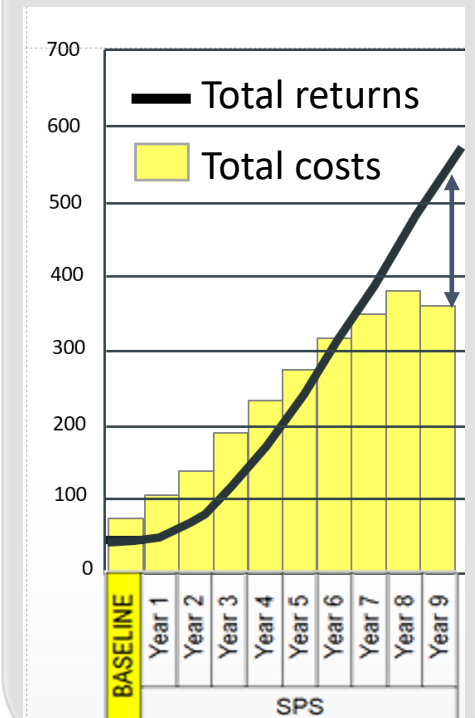
- Feed
- Manure Nox
- Manure methane
- Enteric fermentation

Better animal welfare scores



- Good Feeding
- Good Housing
- Good Health
- Appropriate Behavior

Improved profits (USD per ha)



agri benchmark

– passionate about facts



Dr. Claus Deblitz

Thünen Institute of Farm Economics
Bundesallee 63, 38116 Braunschweig

Tel.: +49-531-596-5141

E-mail: claus.deblitz@thuenen.de

Internet: www.agribenchmark.org
www.thuenen.de/en/bw/

Link to video on silvopastoral systems

<https://www.youtube.com/watch?v=kqdYl5QfEio>