



Institute of Farm Economics

What is *agri benchmark*?

**Side Event to the 37th Session of the Committee on World Food Security
Rome, October 18th 2011**

Dr. Yelto Zimmer, Coordinator *agri benchmark* Cash Crop

Global Partners: **syngenta**



***agri benchmark* – What for & Principles**



Understand agriculture world wide

Independent, non-political, non-profit

Scientifically sound and relevant to decision makers in policy, industry & farming

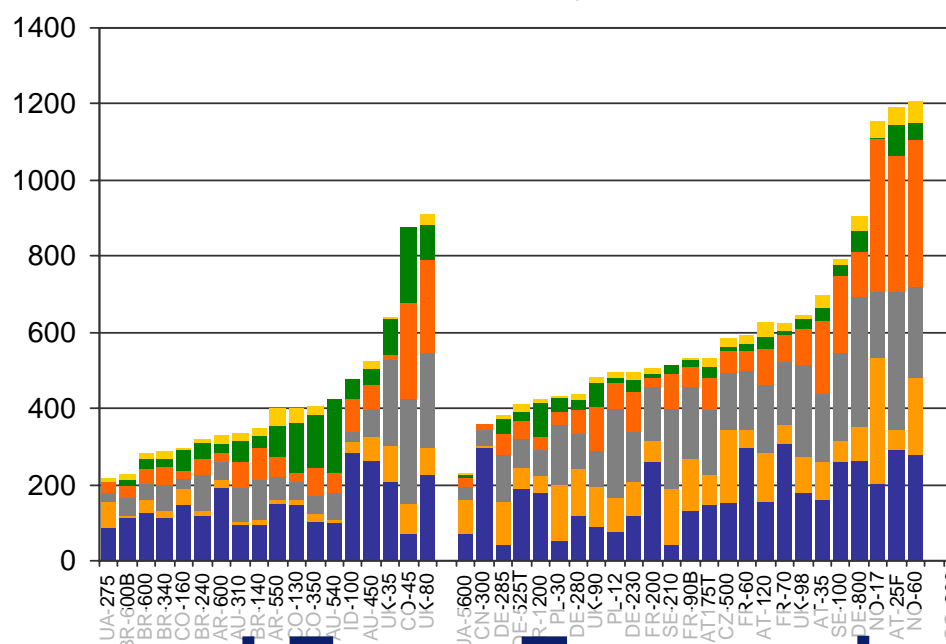
Coordination by vTI (Public Research Institute) and DLG



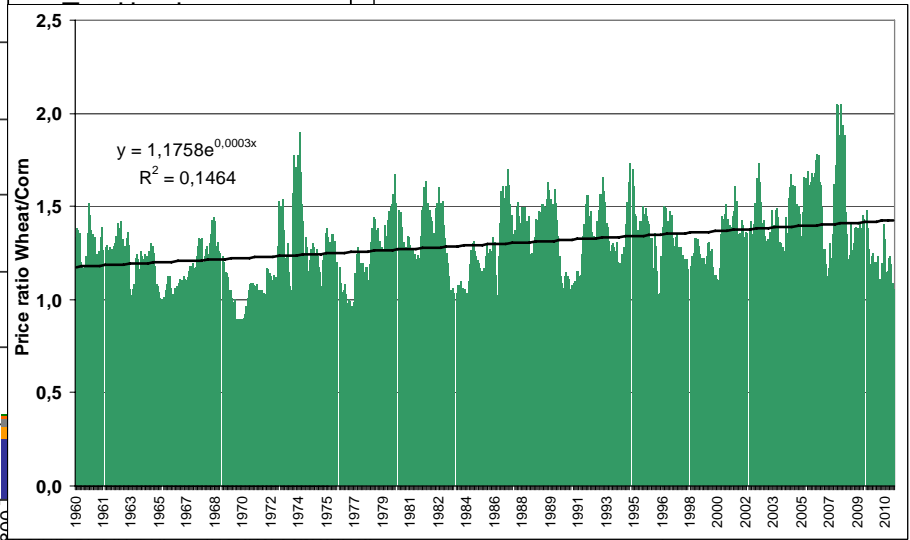
Understanding Production Systems ...



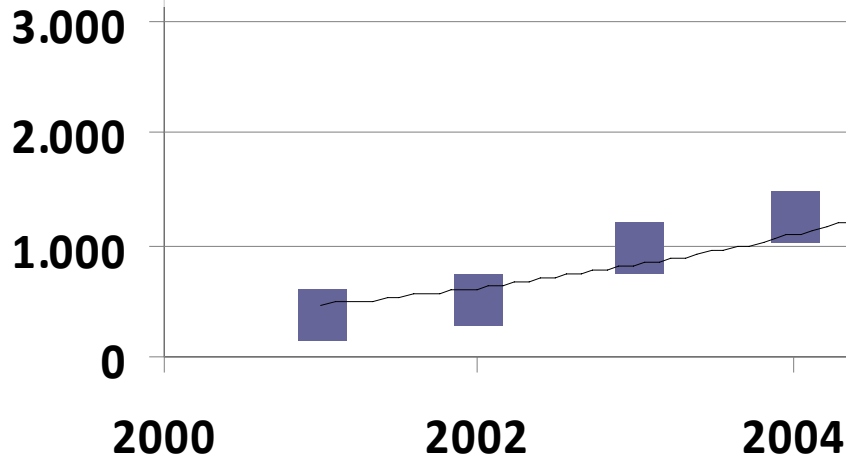
Cost Beef & Production Systems



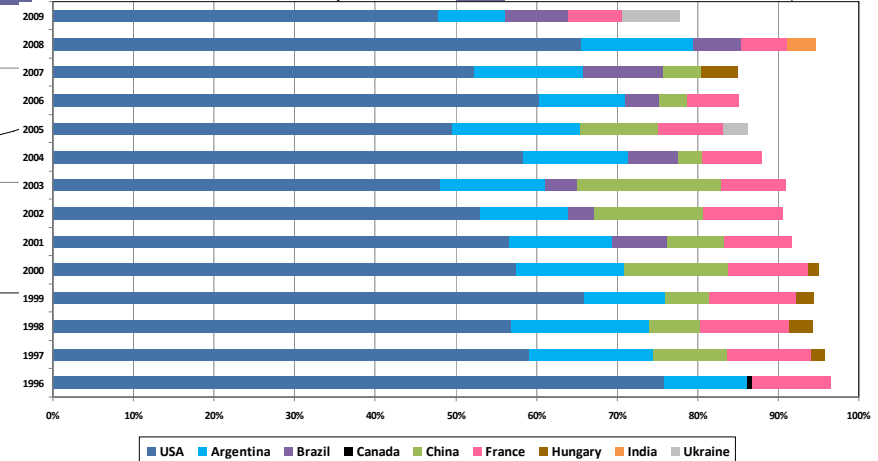
Price Ratio Wheat/Corn



...and Farm Economics and Markets



Top 5 Corn Exporters





Our Global Partnerships



**41 Universities and National
Research Institutes**



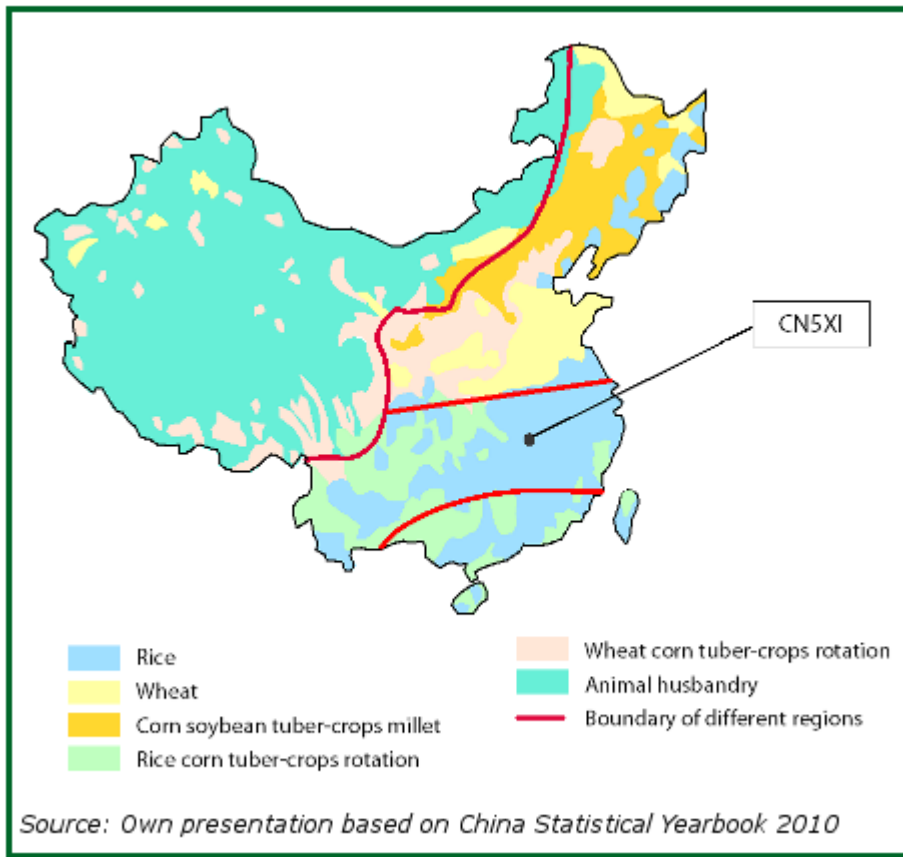
**10 Associations and
Unions**



**7 Consultancies and Farm
Management Companies**

Preparation for the typical Farm

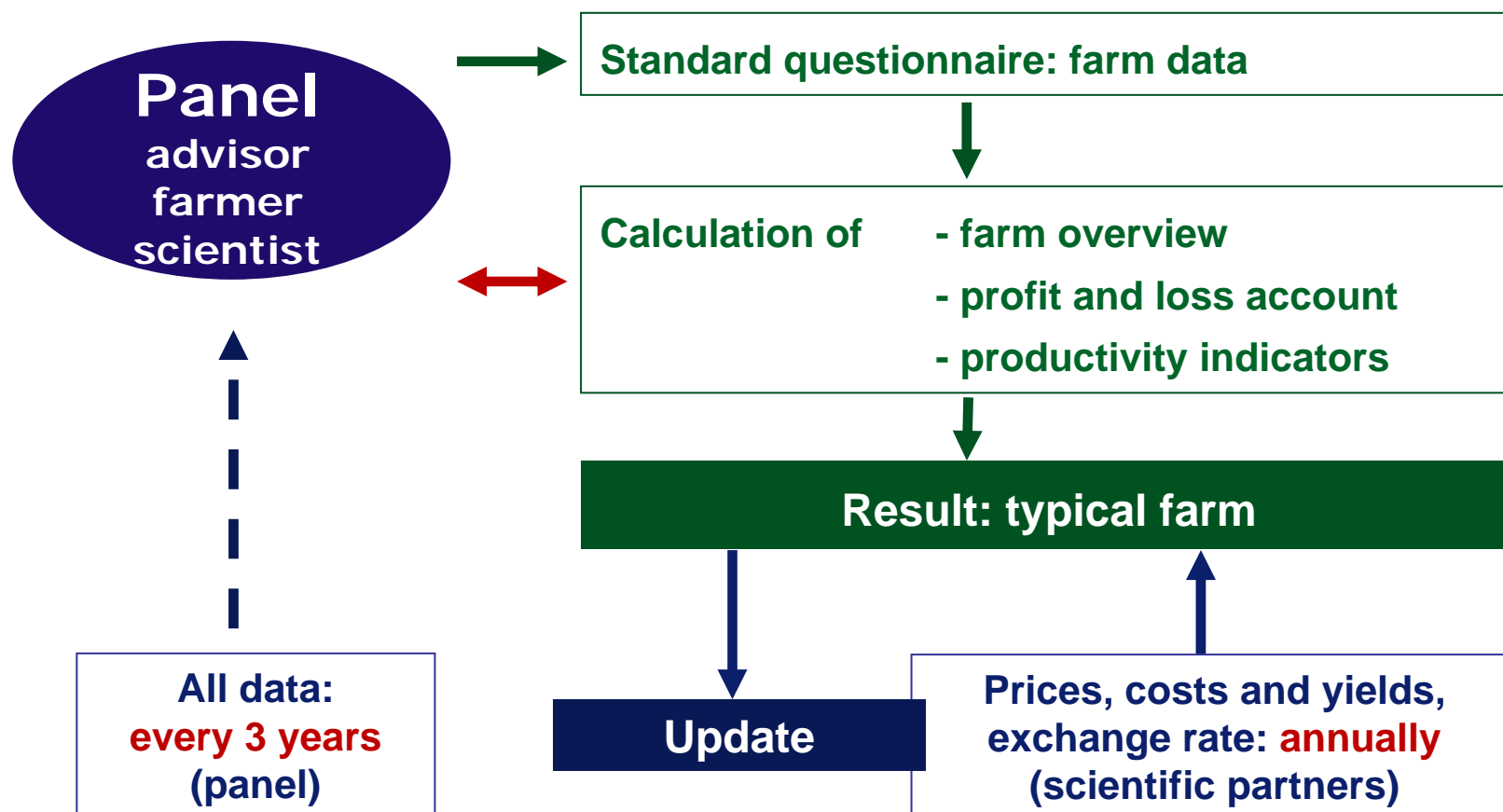
Main regions of agricultural production in China



Plus statistics and expert know how int. al. regarding:

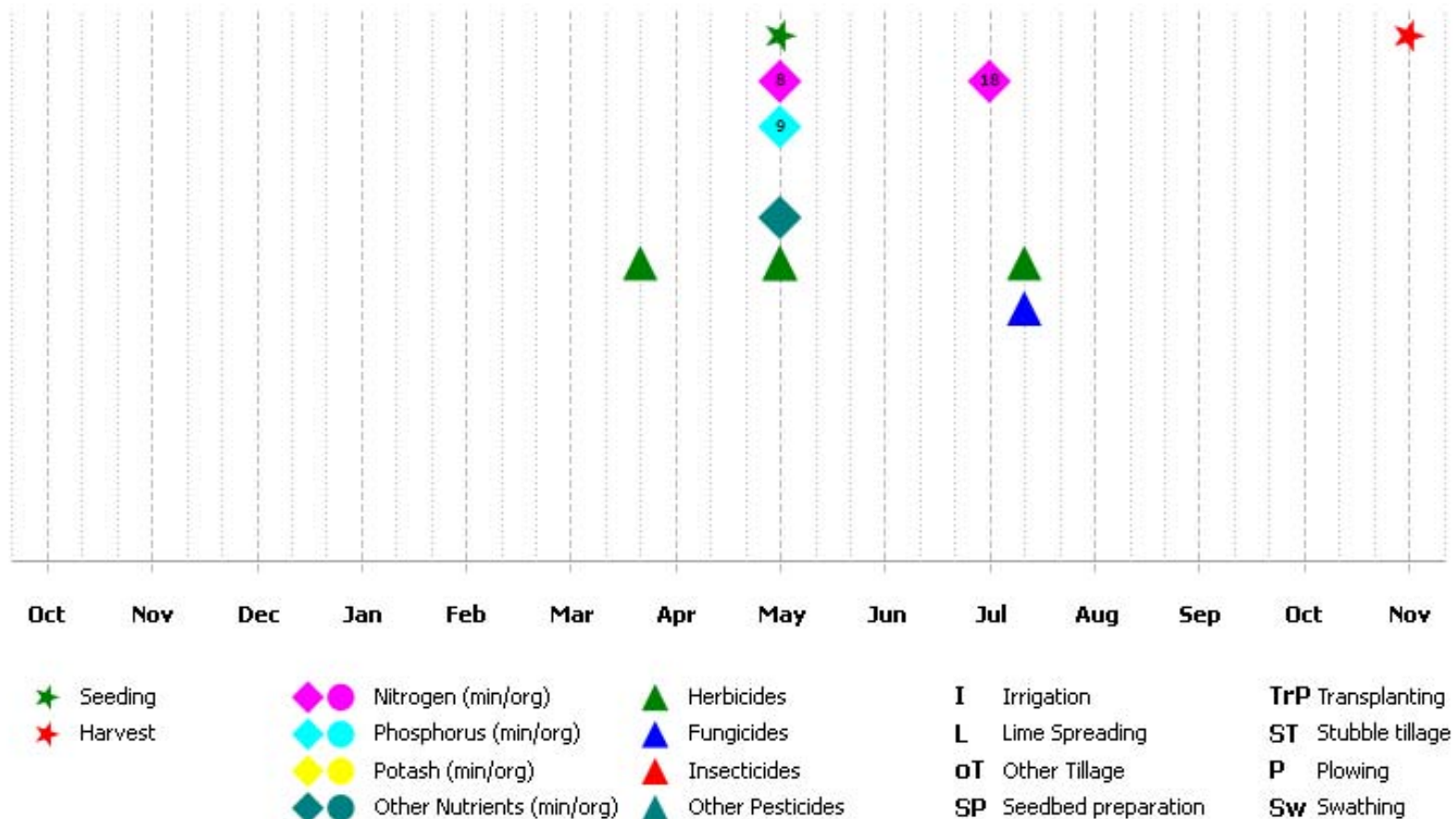
1. Farm size
2. Combination of enterprises
3. Yields & herd sizes / breeds
4. Labor force (family vs. hired labor)
5. Tillage systems
6. Tenure vs. ownership

The panel process on the national level – realized by our partners



Data on Cropping Systems – Example: Malting barley in Western Australia

AU4000WB* - barley (malt) after wheat



Benefits generated through *agri benchmark*

- Data & Information -

1. National networks of typical farms, which allows for an ongoing comparison of
 - (a) different sites
 - (b) production systems
 - (c) farm types/sizes
2. Information on international competitiveness of national products/production systems and structures.
3. Infrastructure to monitor and predict farm level adjustments to policy interventions and to technological innovations (“what-if-studies”)

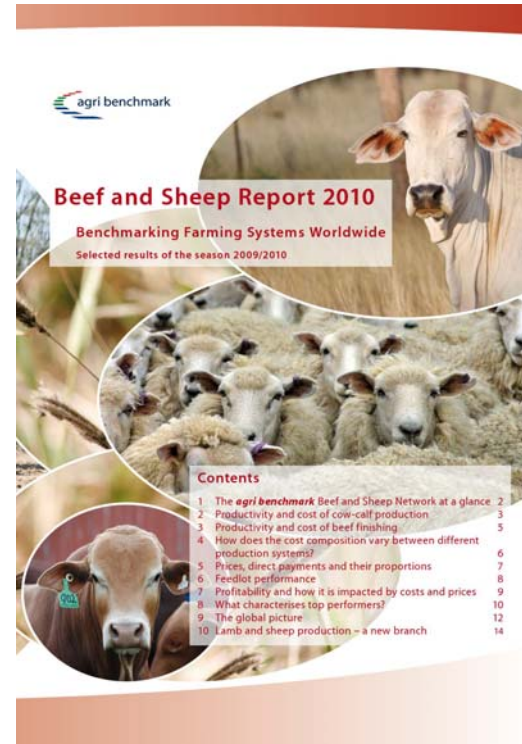
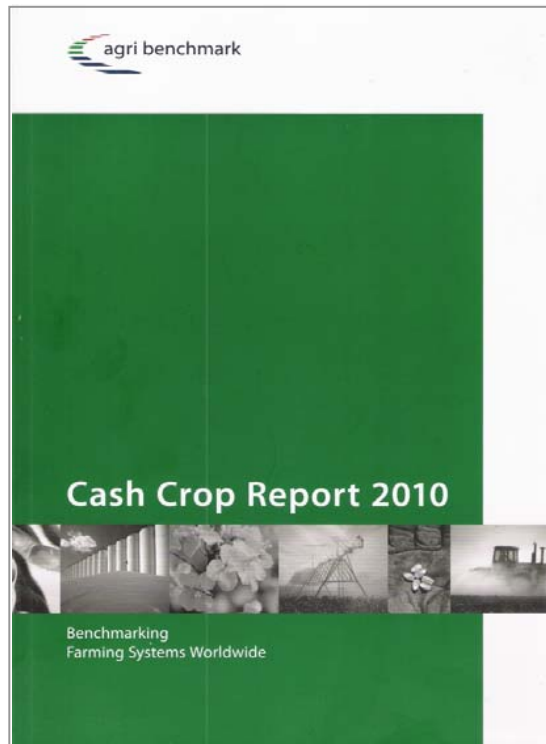
Benefits generated through *agri benchmark*

- Capacity Building -

- 1. National experts are exposed to an global network of farm economists and global developments in agriculture.**
- 2. They get trained to present findings in an inspiring and challenging international forum.**
- 3. They get exposed to “real world” farm challenges; thereby they are enabled to project farmers decision making.**
- 4. They can liaise with domestic agricultural experts from policy, food value chain and farmers union.**
- 5. They get used to run farm economic analysis; thereby they are trained to support strategic policy debate.**

Sustainable Research Strategy

1. Annual farm and market data gathering and analysis
2. Annual contributions to *agri benchmark* reports



Knowledge is our Business

Thanks for your interest



Dr. Yelto Zimmer

- Head of **agri benchmark** Cash Crop team -

Institute of Farm Economics

Johann Heinrich von Thünen-Institute

Bundesallee 50, 38116 Braunschweig

phone

+49-531-596-5155

mobile

+49-173-5722723

e-mail

yelto.zimmer@vti.bund.de

internet

www.agribenchmark.org

www.bw.vti.bund.de