

US_240_0

Cow-calf producer

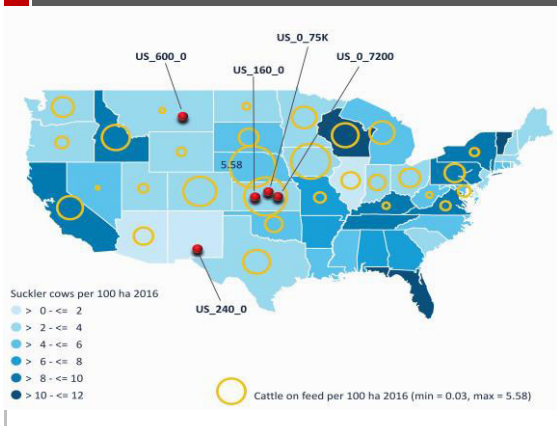
Farm overview

Legal status	Family farm
No. of breeding cows	240
Breed	British * Continental
No.&type finished cattle sold p.a.*	
Production system finishing*	0
No. weaners produced p.a.	157
Stocking rate (cows per ha)	0,05
Family labour (hours)	2 650
Hired labour (hours)	136
Other activities	Backgrounding, Lease hunting

* only if finishing on the same farm

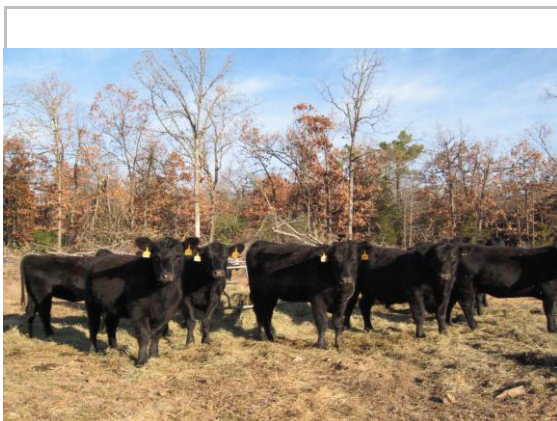


Location



Natural conditions

Country	USA
Region	New Mexico
Relief	Hills
Elevation (above sea level)	1513 m
Soil	Sandy loam
Climate	BS – dry semiarid (steppe)
Main growing season	April – late October
Average annual temperature	13 °C
Average annual precipitation	390 mm
Precipitation	75% from May – September



Particularities

The farm has next to the cow-calf also a backgrounding and lease hunting enterprise. The farm purchases of 200 stocker steers for backgrounding March - October (240 days).