

DE\_300\_0

## Cow-calf producer

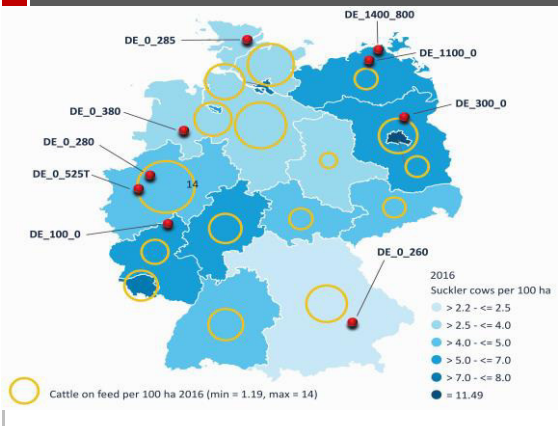
### Farm overview

Legal status	Family farm
No. of breeding cows	300
Breed	Various
No.&type finished cattle sold p.a.*	
Production system finishing*	0
No. weaners produced p.a.	199
Stocking rate (cows per ha)	1,03
Family labour (hours)	3 509
Hired labour (hours)	3 509
Other activities	—

\* only if finishing on the same farm

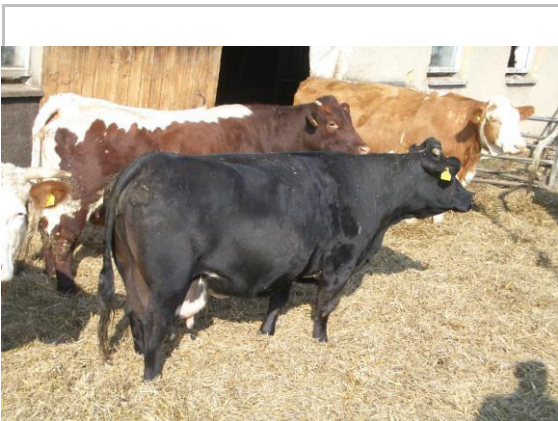


### Location



### Natural conditions

Country	Germany
Region	Brandenburg
Relief	Lowlands
Elevation (above sea level)	50 m
Soil	Sandy
Climate	D – Moist continental mid-latitude climates
Main growing season	May – September
Average annual temperature	8,5 °C
Average annual precipitation	600 mm
Precipitation	even distribution, trend towards continental climate



### Particularities

The farm data is based on a typical family farm which is located in Brandenburg in north-east Germany. On the area of 300 ha, there are working 2 permanent employees and 2 family members. More than 86 % of the land are pastureland. The large farm rears a herd of 300 various suckler-cows and weans 255 calves. First calving is with the age of 30 months. Weaning weight is around 250 (female) to 280 (male) kg with weaning age around 7 months. The farm owns quite new buildings and is good equipped with machine.