

DE_100_0

Cow-calf producer

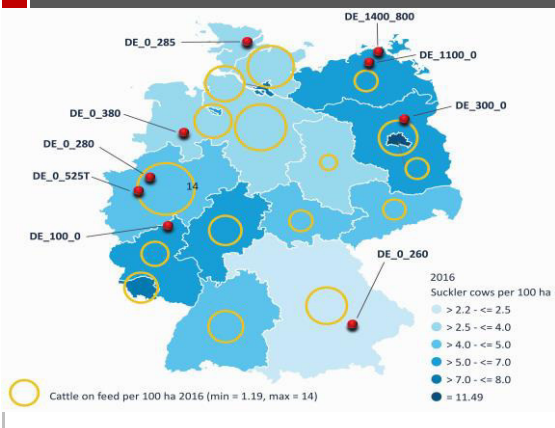
Farm overview

Legal status	Family farm
No. of breeding cows	100
Breed	Limousin
No.&type finished cattle sold p.a.*	
Production system finishing*	0
No. weaners produced p.a.	76
Stocking rate (cows per ha)	0,83
Family labour (hours)	3 923
Hired labour (hours)	
Other activities	Cash Crops

* only if finishing on the same farm

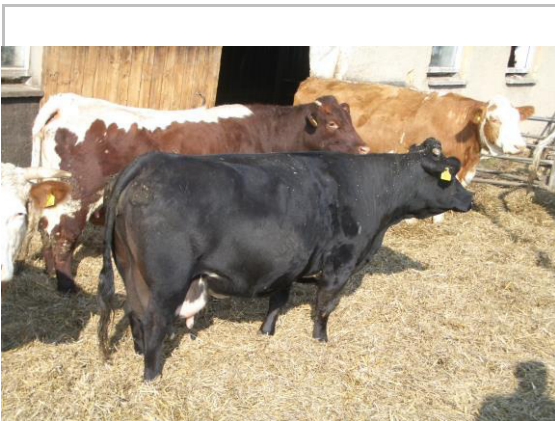


Location



Natural conditions

Country	Germany
Region	Westerwald
Relief	Low mountains
Elevation (above sea level)	450 m
Soil	Sandy
Climate	Df – wet all seasons
Main growing season	April – October
Average annual temperature	8 °C
Average annual precipitation	1000 mm
Precipitation	Evenly (peak June – July, December)



Particularities

The Westerwald (where the farm is located) has for a low mountain range a typical agreeable climate. Whole farm covers 160 ha, around 32 % of the land is arable land. Around 1.5 family labour units work on the farm. First calving periode is at the age of 30 months. Weaning weight is around 290 (female) to 300 (male) kg with weaning age of 8-9 months. Feed rations consist of home grown grass silage and winter grains (rape, wheat, barley). Farm is well equipped with buildings and machine.